

# Microminiature Pushbutton Switches ESD proof



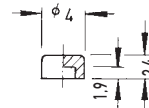
## Specifications:

Contact rating:	max. 28 V DC, 0,4 VA min. 20 mV DC, 1 $\mu$ A
Contact resistance:	< 100 m $\Omega$
Insulation resistance:	> 500 M $\Omega$ at 250 V DC
Dielectric strength:	250 V, 50 Hz for the duration of 1 minute
Operating temperature:	- 20° to + 80° C
Mechanical life:	minimum 30 000 operations
Contacts:	phosphor bronze, gold-plated
Terminals:	PC terminals, crimped, phosphor bronze gold-plated
Material:	case and button: PES, meets UL 94 V-0, washable
Mounting:	on pc-board
Soldering conditions:	auto-soldering – max.: 7 sec, 250° C $\pm$ 5° C max.: 5 sec, 270° C $\pm$ 5° C
ESD resistance:	> 8 kV (between button and terminals)

## Accessories:

### Plastic caps

black	KF 4105
grey	KF 4107
red	KF 4109
white	KF 4110



## Models:

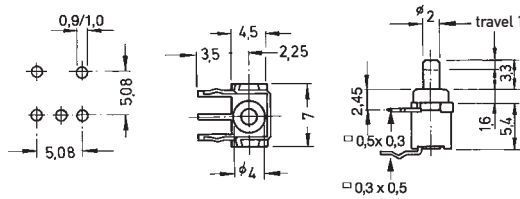
Switching functions: when looking at the brand name, the normally closed contact is on the right hand side.

**washable**

S P D T

FP 1 F – RA

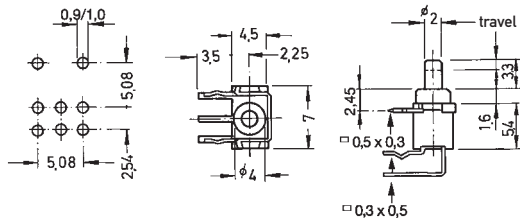
mom – on



D P D T

FP 2 F – RA

mom – on





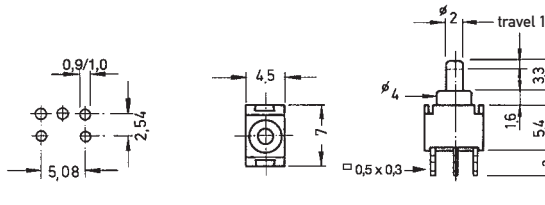
# Microminiature Pushbutton Switches ESD proof

**Models:** Switching functions: when looking at the brand name, the normally closed contact is on the left hand side.

washable

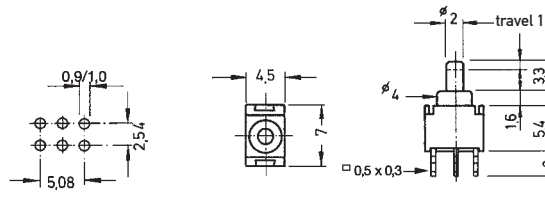
SPDT  
FP 1F

on - mom



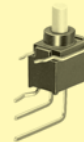
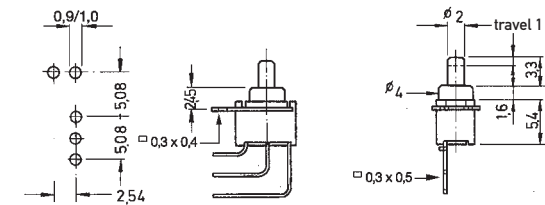
DPDT  
FP 2F

on - mom



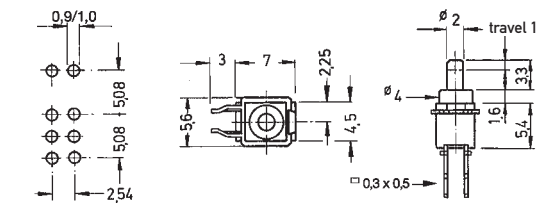
SPDT  
FP 1F-VM

on - mom



DPDT  
FP 2F-VM

on - mom



3